

CLEVERTOUCH®

IMPACT Plus™

Designed specifically to meet the needs of the digital and conventional classroom alike, the Clevertouch IMPACT™ series is more than just an interactive touchscreen, it delivers a truly intuitive and collaborative experience.

Filled with features to support teaching and learning your way, Clevertouch IMPACT™ offers the solution needed to add value to your lessons and free teachers from the constraints of restrictive, traditional technology.



Multi-award-winning education solutions for the digital classroom



Interactive Display Technology of the Year
AV Awards
2019 - Winner



Interactive Product of the Year
AV Awards
2017 - Winner



Digital Devices
BETT Awards
2019 - Finalist



Collaboration Product of the Year
AV News Awards
2018 - Winner



Tech & Learning Best of Show
Tech and Learning
2019 - Winner



Tech & Learning Best of Show
Tech and Learning
2018 - Winner

Teachers can concentrate on teaching

With mobile device management (MDM) and over-the-air updates (OTA), the update of software, apps, firmware, and troubleshooting is all controlled remotely by your IT department, leaving teachers free to teach.

Integrate effortlessly

With Clevertouch, teachers are not limited to one type of presentation suite, software provider, platform or OS. Teachers are free to use existing resources - and convert old resources tied to other providers - easily and quickly. Teachers can also switch seamlessly between Android and PC modes and continue using existing services such as Google Classroom or Microsoft packages effortlessly within your Clevertouch suite.

Express connectivity

Our elevated connectivity allows you to share content with Android, iOS, Windows and Chrome devices. As expected, Wi-Fi® and Bluetooth® and a slot-in PC option ensures we've got your connectivity covered. Including 4GB RAM, extensive storage for those non-cloud needs, Gigabit LAN integration, 4K User Interface, OTA Updates and Remote Management - just some of the features of this world class product.



Practical differentiation

Teachers and students are more connected than ever, with easy to use mirroring and touch-back on up to 50 devices at any one time. Use split screen mode to show the work of 4 students at once. The teacher can use their mobile device to control their Clevertouch, giving them freedom of front of class instruction while enabling effective individual, small group and peer learning to help close the attainment gap.

Powerful and feature rich – Impact Plus is designed for today's classroom

NEW Super Wide Sound

45W Max Power for room-filling sound.

NEW Microphone

Built-in line array microphone.

NEW 4K

True 4K resolution and sharper user experience throughout

NEW Clever Account Profile with NFC

With an NFC sensor built into the bezel, just tap your NFC card on the bottom of the screen to instantly log in to your profile.

NEW High Precision Technology

Our patented Super Glide Touch technology offers the most fluid writing experience on a touchscreen. It's as smooth as writing on a whiteboard – with no lag. With the ability to differentiate between palm-erase, fingertouch, and stylus-writing, there's no need to change settings mid-flow.

NEW New super cool stylus

Comfort stylus to aid teaching

Comprehensive Warranty

No ongoing subscriptions charges.

Security Matters

We know how important it is to be secure, so we've got lots of options for you to keep control of your device. Clevertouch can run on-or-off the network. Settings, apps and Android can all be disabled. Data can be wiped at the end of a session and the screen can be locked with a secure passcode.

Infinity Whiteboarding

Never run out of space with our infinite canvas. With numeracy tools, handwriting-to-text recognition, and the ability to insert images and shapes, all of which can be saved, printed, or shared to student devices.

Cleverstore

Access hundreds of free teaching apps to make lessons more engaging.

Cloud Accounts

Sync with your Cloud accounts so that you can work anywhere at any time.

NEW Connectivity

Huge connectivity including two of the latest USB-C ports. Allows single cable connection for audio, video and touch. One USB-C gives the ability to charge your device while also casting to the main display.

NEW Environmentally Friendly Motion Detection

Equipped with Proximity Sensors your Clevertouch will power off when no one is detected in the room.

How IMPACT Plus™ works for your school



Save time lesson planning with subscription free software



Apps for Blended Learning



Screen mirroring with built-in teacher controls



Making integration and installation easier



High Precision Technology



Send messages, alerts and media to all of your Clevertouch screens remotely.

Quick Launch Menu for instant teaching tools

Your most commonly used apps are available with one touch and are easily accessible via the Quick Launch Menu.

Annotation tools can be accessed at any time, keeping lesson flow smooth and simple, ensuring increased student engagement.

The Clevershare App is free to download and compatible with Android, Windows, iOS and Chrome devices. Up to 50 devices can connect with the Clevertouch screen and share content – images, video, and audio. The presenter has full control over what is shared, and can show up to 4 device screens simultaneously, increasing student collaboration and participation within every lesson. Now includes touch-back.

Make notes, diagrams or images, add and scroll through multiple pages, insert an image or change the background colour. Now includes handwriting and formula recognition.

Double click on files to open them, as well as easily copy, cut and paste, so it's just like using a PC. Personal Cloud Storage integration.

Explore the internet without needing a computer, using the IMPACT™, Chrome and Chromium browsers.

Cleverstore contains hundreds of apps in all subjects and a range of languages, including literacy, STEAM and languages. Each app is tested by our team, to make sure no adverts, in app purchases, or inappropriate content gets through. We've partnered with the most popular educational app developers to give you apps that you can really make use of in the classroom.

Easily go back to recently used apps using the Active button with split screen mode.

Protect your Clevertouch with a password by using Lock.

All of the integrated apps and the apps you've downloaded from the Cleverstore can be found here.

All your favourite apps in one place, including Settings.

Floating annotation tool - Annotation, voting, spotlight, handwriting, timer, stopwatch, snipping and zoom tools.



All included in panel pricing, and no on-going costs

CleverMessage™

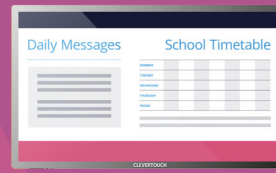
EXCLUSIVE TO
CLEVERTOUCH

With CleverMessage™ your Clevertouch isn't just a screen for teaching, it's also a communications tool. Use it to broadcast messages, alerts and important information to students, staff and visitors.

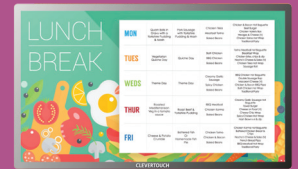
It's so easy and free to use!

- 1** Create an online account and connect your Clevertouch screens.
- 2** Add your logo, school colours, images, YouTube channel, videos, posters and more.
- 3** Choose your template and schedule your alerts.

Flexible Messaging Solutions



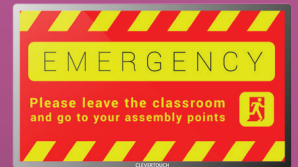
Daily news and activities



Weekly lunch menu



Live video messages from the school office



Emergency announcements and fire drills

— DO IT —
your way
Seamless integration



Flexible IT Computing Solutions

Upgrade to a Windows 10 Pro state-of-the-art latest Intel® OPS module.



From height adjustable mobile trolleys to wall mounts, we have a variety of solutions available to make your installation complete.

[clevertouch.com / accessories](http://clevertouch.com/accessories)

CLEVERSTORE®

Download your favourite Apps or search our FREE to use Cleverstore.

Google for Education



Using a Certified by Google Chromebox you can access the easy-to-use Google Classroom interface, allowing you to quickly create, save and share content.

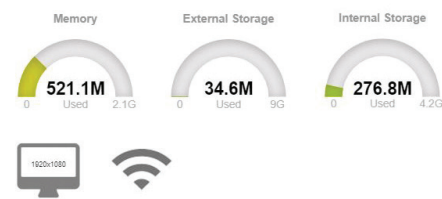
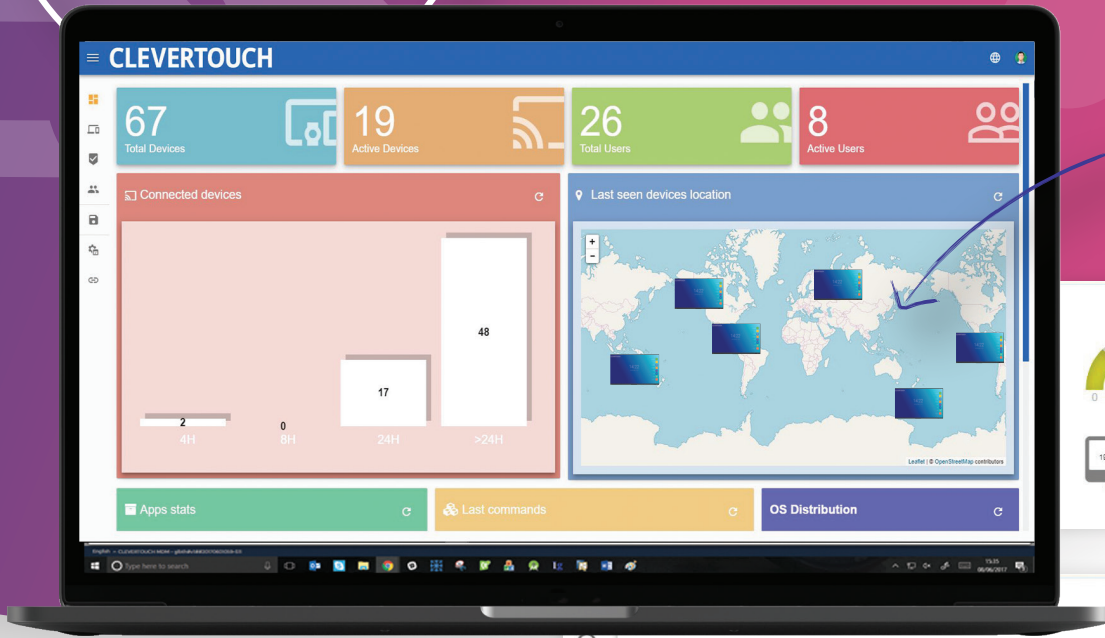
All included in panel pricing, and no on-going costs

MDM & OTA functionalities mean you can control multiple Clevertouch devices, wherever they are!

Remote Management

IT departments and school administrators can take control with our MDM and OTA functionalities. No need to visit each classroom to upgrade or troubleshoot, now it can all be done remotely.

An overview of all your Clevertouch displays



Update or Remove apps

View status information

View the Clevertouch screen

Install apps and files

Push messages to the Clevertouch

Lock and unlock a Clevertouch

Restart or Shutdown your Clevertouch

Add tags so you can group your Clevertouch fleet

A screenshot of an application list on a device. The list shows various apps with their icons, names, and version numbers. The apps listed are: Wikipedia / V.92, WPS Office / V.129, Visualizer / V.1, Video / V.80, Settings / V.1, ScreenLock / V.1, Note / V.62, Lynx / V.4, Getting Started / V.1, Gallery / V.40030, and Files / V.1. Each app entry has a small square icon to its right, and a trash can icon to its left.

- Remote
- Repositories actions
- Send Message
- Location
- Lock
- Power
- Manage

View Individual Clevertouch Screens, update apps settings and more!

Instant Over-the-Air Updates (OTA)

The new Over-the-Air technology means that new features, bug fixes, software and hardware updates can be seamlessly delivered to every Clevertouch screen. With just the click of a button the Clevertouch screen will search for the latest

firmware update and install it, giving you instant access to the latest apps and features. Patch fixes no longer have to be downloaded onto a USB and uploaded manually, giving IT Managers more time and less hassle.

Which IMPACT™ is for you?

	IMPACT™	IMPACT Plus™
Sizes	65" 4K, 75" 4K, 86" 4K	55" 4K, 65" 4K, 75" 4K, 86" 4K
RAM	2GB RAM	4GB RAM
Internal Storage	16GB	32GB
4K UHD (3840x2160 @60Hz)	Yes	Yes
Tempered Glass - Mohs Level 7	Yes	Yes
High Precision Technology	Yes	Yes
20 Continuous Touch Points	Yes	Yes
Finger, Gesture & Pen	Yes	Yes
Simultaneous Writing	Yes	Yes
Ink-In Tools Via LYNX	Yes	Yes
Dual Recognition Stylus	Yes	Yes
Palm Rejection	Yes	Yes
Annotate Over Any Source	Yes	Yes
Classroom Essential Apps: Includes Whiteboard, Annotate, Timer, Media Players, Browser, Pdf Reader, Screen Record, Spinner, Voting, Maths Tools	Yes	Yes
Compatible With Windows 7 To 10, Windows XP, Linux, Mac, Android, Chrome	Yes	Yes
LUX 8 Powered By Android Oreo 8	Yes	Yes
2 X 15 Watt Speakers	Yes	Yes
Ops Intel Pc Slot	Yes	Yes
Great Connectivity	Yes	Yes
V811 Chipset		Yes
Motion Sensor		Yes
Array Mic		Yes
Usb-C x2 With One Charging Ability		Yes
Integrated NFC		Yes
Clevershare Hardware Integrated		Yes
Super Wide Sound Subwoofer		Yes
True 4K User Interface		Yes
Super Cool Stylus		Yes
Android Module Upgrade Slot		Yes
Display Port x1		Yes

© 2019 Clevertouch. All rights reserved. Sahara Presentations Systems PLC. is the owner of a number of trademarks in several jurisdictions across the world including but not limited to Clevertouch, the Clevertouch Logo, UX Pro, IMPACT™, IMPACT Plus™, LUX, Lynx, CleverMessage, Cleverstore and Clevershare. All third-party trademarks (including logos and icons) referenced by Clevertouch remain the property of their respective owners. Unless specifically identified as such, Clevertouch's use of third-party trademarks does not indicate any relationship, sponsorship, or endorsement between Clevertouch and the owners of these trademarks. Applicable Terms and Conditions for warranty and support available at clevertouch.com/about/warranty. All weights and dimensions are approximate. Product specifications are subject to change without notice. Clevertouch.com.

Display

Diagonal Size	55" 4K, 65" 4K, 75" 4K, 86" 4K
Screen Type	TFT LCD - Direct LED Backlight
Aspect Ratio	16:9
Display Colours	1.07 Billion (10 bit)
Resolution	4K UHD (3840x2160 @60Hz)
Response Time	5ms
Refresh Rate	60Hz
LCD Viewing Angle	178°
Brightness	420 cd/m ²
Contrast Ratio	55" 4000:1
	65" 4000:1
	75" 4000:1
	86" 4000:1
Dynamic Contrast Ratio	55" 5000:1
	65" 5000:1
	75" 5000:1
	86" 5000:1
Glass Hardness	Tempered Glass - Mohs Level 7
Glass Type	Heat tempered - Anti Glare - Super Glide Surface
Life of Screen	50,000 hours

Interactivity

Writing Technology	High Precision Technology
Continuous Touch Points	20
Touch Resolution	32768x32768px
Response Time	5ms
Touch Accuracy	1.5mm
Minimum Object Size	3mm
Touch Tool	Finger, Gesture & Pen
Simultaneous Writing	Yes
Ink In Tools	Yes - LYNX
Pens Included	2 with different colour assignment to each end
Pen Type	Dual Recognition Stylus
Pen Holder	Integrated Full-length Pen Tray
Pen Tip Diameter	3mm/7mm
Pen & Touch Differentiation	Yes
Pen Identities	2
Palm Rejection	Yes
Annotation Over Any Source	Yes
Classroom Essential Apps	Includes Whiteboard, Annotate, Timer, Media Players, Browser, PDF Reader, Screen Record, Spinner, Voting, Maths Tools
Compatibility	Windows 10, Linux, Mac, Android, Chrome
Tracking Rate	6m/s
Scan Rate	200Hz
Gestures & Edge Swipes	Windows Supported, OSX With additional Driver

Connectivity

OPS Slot	1 - Intel® spec
HDMI In	3
HDMI Out	1
USB-A 2.0	3 (1 for system upgrade)
USB Touch (type B)	2
USB A 3.0 (faster data transfer)	3
USB C	2 (One supports 45W charging any device)
LAN In (RJ45)	1 GB
RS-232	Yes
Wake-on-Lan	Yes
Wireless Adapter 2.0 + WAP	Yes
Bluetooth	Yes - 4.0
Displayport In	1
VGA In	1
VGA Audio In	1 (3.5mm)
Optical Out	1 (Coax)
Headphone	1 (3.5mm)
Touch Out	3
NFC Reader / Writer	Yes
Camera	Optional extra
Proximity Sensor	Yes
WIFI	IEEE 802.11a/b/g/n/ac with 2 x 2 MIMO (hotspot only) (both 2.4 and 5 GHz bands). Capable of speeds up to 433Mbps

Computing

Operating System	Android Oreo 8
System Version	LUX 8
RAM	4GB
Internal Storage	32GB
CPU	Dual Core A73+Dual Core A53
GPU	Quad Core Mali G51
Android Resolution	4K
Android Module Slot	Yes
Integrated LUX UI	Yes

Audio

Dual Front Facing, Bass Enhanced Speakers	2 x 15 Watt Speakers + 15 Watt Subwoofer
Audio Out	Yes
SPDIF / Fibre	Yes
Sound Channel	2.1
Line Array Microphone	Omni-directional up to 8 meters
Super Wide Sound	Yes

Power

Power Requirements	100 – 240V – 50/60Hz
Power Consumption (Normal)	55" 87W 65" 118W 75" 124W 86" 172W
Power Consumption (Standby)	< 0.5 Watts
Ultra Quiet Fanless Design	Yes

Operating & Storage Environment

Operating Temperature	0° to 40°
Storage Temperature	-20° to 60°
Operating Humidity	10% to 90% RH
Storage Humidity	10% to 90% RH
Altitude	Below 5000 metres

Physical Specifications

Panel Dimensions	55" 1268x792x90mm 65" 1489x919x91mm 75" 1709.7x1042.4x94.8mm 86" 1957.2x1181.9x94.8mm
Packed Dimensions	55" 1428x878x220mm 65" 1697x1038x220mm 75" 1875x1208x280mm 86" 2146x1326x280mm
Net Weight	55" 31.25Kg 65" 43.95Kg 75" 56.73Kg 86" 73.45Kg
Packed Weight	55" 38.55Kg 65" 53.95Kg 75" 75.75Kg 86" 95.30Kg
VESA Mount Point	55" 400x200mm 65" 600x400mm 75" 800x400mm 86" 800x600mm

Warranty

Warranty term and upgrade options vary by region. Contact your local reseller or distributor for information and visit www.clevertouch.com/about/warranty

Compliance & Certification

Regulatory Certification CE, FCC, UL, Energy Star & EEC



IMPACT™ Built-in Features

NUITEQ™ Snowflake	Yes
LYNX™ App With Online Lesson Planning	Yes
Cleverstore™ App Store For Education	Yes
Embedded Digital Signage	Yes
Clevershare™ Mirroring Any Device To The Board	Free for the life of the screen (touch back)
Integrated Personalised Accounts Profiles	Yes
Cloud Account Access	OneDrive Google Drive
Embedded Room Booking	Yes
Whiteboard Annotation	Yes
Email Out Direct From Touchscreen	Yes
Scan QR Code For Saving Work	Yes
CleverMessage™ - Instant Alert Messaging	Yes
Over-the-Air Updates	Yes
Remote Management Of Touchscreens (MDM)	Yes - Five year licence

Packed Contents - Inside your Clevertouch Box

What's In The Box	(1) Clevertouch IMPACT Plus™ (1) 1.5M Length HDMI Cable (1) 3M Length USB cable (A-B) (2) 1.5M USBC Cable (1) 3M Regional Power Cable (1) 5M 3.5mm Audio Cable (1) Remote Control (2) Batteries for Remote Control (2) Dual Recognition Stylus (1) User Guide (1) Quick Install Guide (1) Wireless Adapter 2.0 + WAP (5) NFC Cards
--------------------------	--

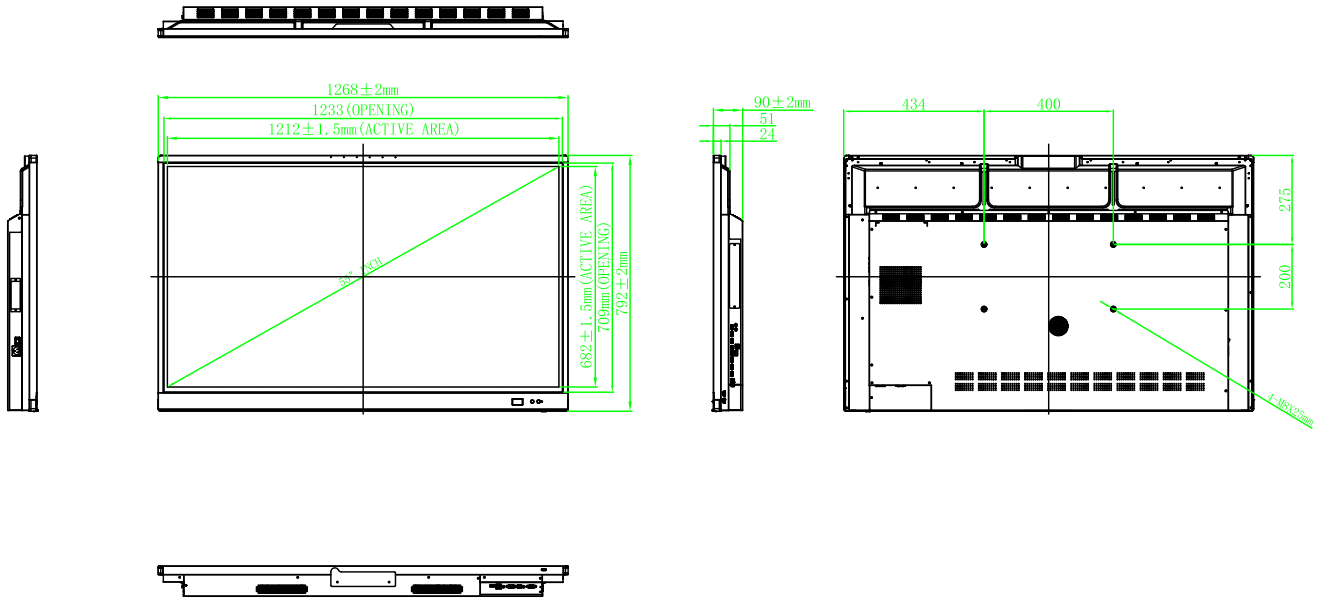
Installation

The installation of this product should be completed by a qualified installer. Use of components not supplied by Clevertouch or not meeting minimum specifications may impact performance, safety and warranty. For more information, visit clevertouch.co.uk

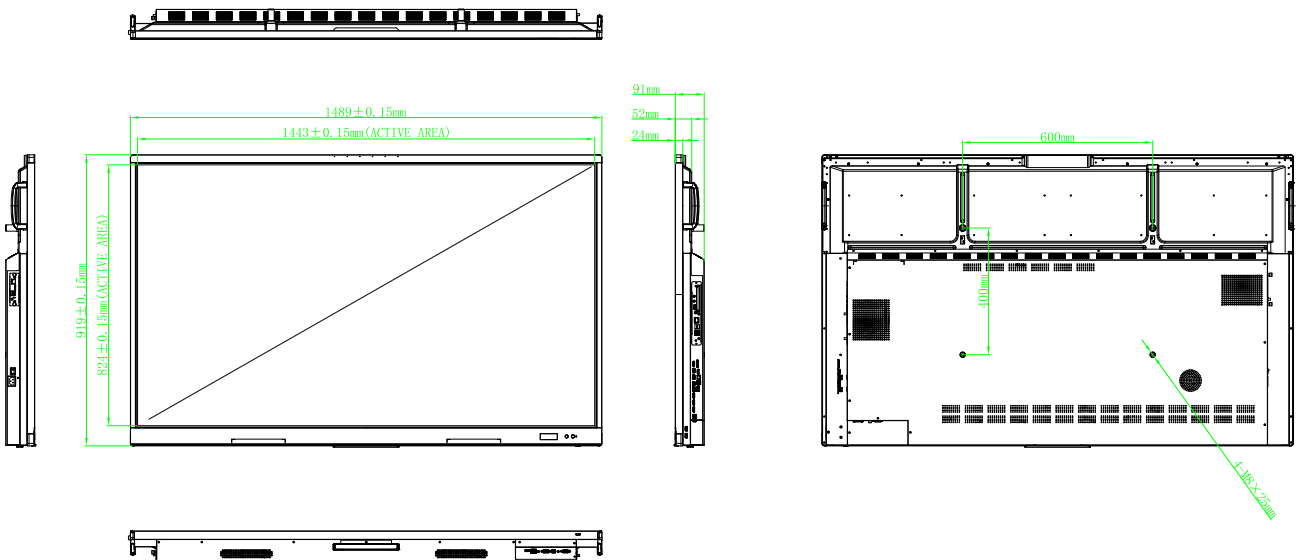
Support

For all Clevertouch products, visit: support.clevertouch.com

55"

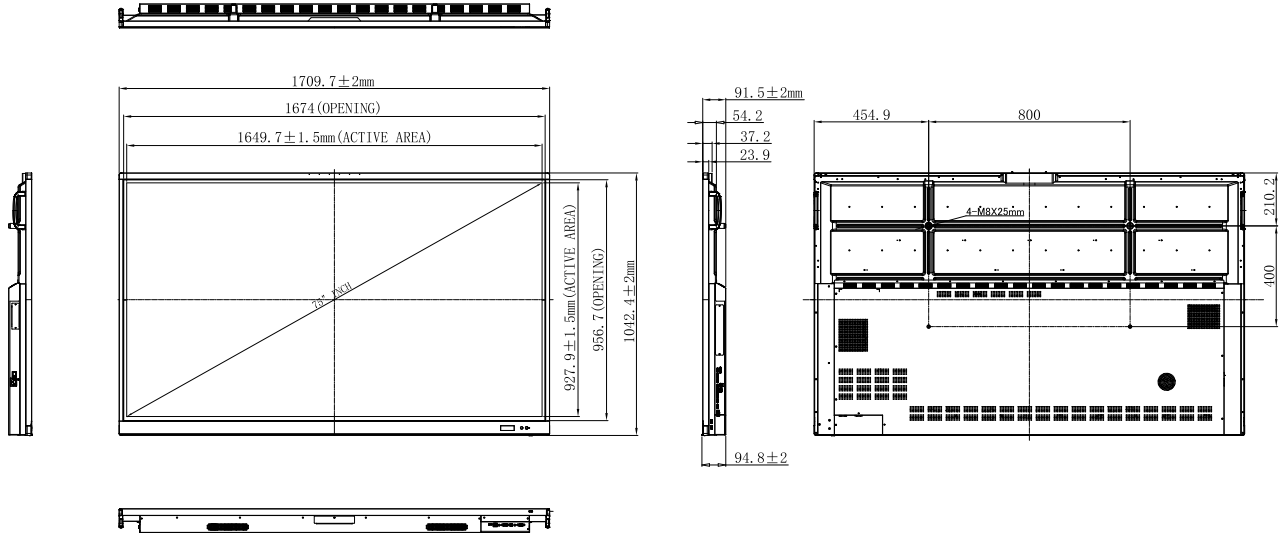


65"

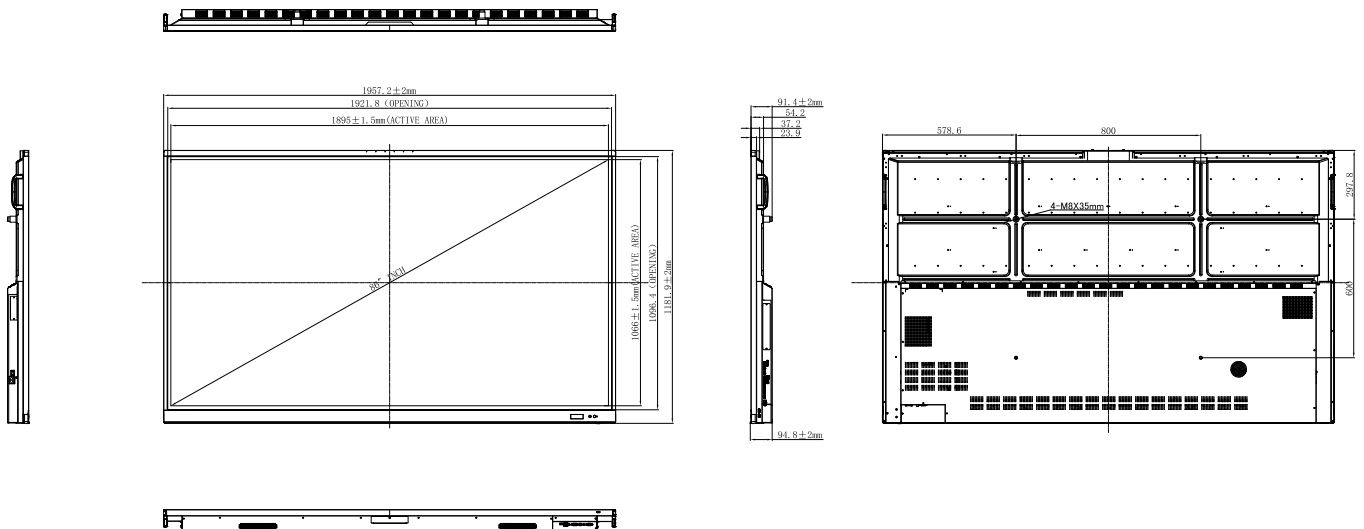


© 2019 Clevertouch. All rights reserved. Sahara Presentations Systems PLC. is the owner of a number of trademarks in several jurisdictions across the world including but not limited to Clevertouch, the Clevertouch logo, IMPACT™, IMPACT Plus™, LUX, Lynx, CleverMessage, Cleverstore and Clevershare. All third-party trademarks (including logos and icons) referenced by Clevertouch remain the property of their respective owners. Unless specifically identified as such, Clevertouch's use of third-party trademarks does not indicate any relationship, sponsorship, or endorsement between Clevertouch and the owners of these trademarks. Applicable Terms and Conditions for warranty and support available at clevertouch.com/about/warranty. All weights and dimensions are approximate. Product specifications are subject to change without notice. Clevertouch.com.

75"



86"



© 2019 Clevertouch. All rights reserved. Sahara Presentations Systems PLC. is the owner of a number of trademarks in several jurisdictions across the world including but not limited to Clevertouch, the Clevertouch logo, IMPACT™, IMPACT Plus™, LUX, Lynx, CleverMessage, Cleverstore and Clevershare. All third-party trademarks (including logos and icons) referenced by Clevertouch remain the property of their respective owners. Unless specifically identified as such, Clevertouch's use of third-party trademarks does not indicate any relationship, sponsorship, or endorsement between Clevertouch and the owners of these trademarks. Applicable Terms and Conditions for warranty and support available at clevertouch.com/about/warranty. All weights and dimensions are approximate. Product specifications are subject to change without notice. Clevertouch.com.

Our Displays are simply Award-winning

2020

AV News Awards

Collaboration Innovation of the Year

Best of Show Awards

Installation at ISE

Best of Show Awards

AV Technology Europe

2019

AV Awards

Interactive Display Technology of the Year

InAVation Awards

Technology for Collaboration & Conferencing

Infocomm

Best of Show - Tech & Learning

Infocomm

Best of Show - AV Technology

Bett Awards

Finalist

AV News Awards

AV Display Innovation of the Year

Keiba

Technology Business of the Year

2018

AV News Awards Awards

Collaboration product of the year

InAVation Awards

Collaboration product of the year

AV Awards

Finalist

Best of Show Awards

Tech & Learning

Bett Awards

Finalist

2017 & 2016

AV Awards

Interactive product of the year

AV Awards

Interactive product of the year

INAVATION AWARDS
TECHNOLOGY WINNER 2019

INAVATION AWARDS
TECHNOLOGY WINNER 2018

